

VERMEND RAT BLOCKER®



Contact information
Vermend LLP
ratblocker@vermend.co.uk
www.vermend.co.uk
Tel: 020 8728 2160

Installation manual

Description

The Vermend Rat Blocker is available in 4 models and can be used in all types of pipes; plastic, cement, steel and clay. The RatBlocker® fits pipes with diameters from 100mm to 250mm.

Models

Type 1: for pipe inside diameters of 100/110mm
Type 2: for pipe inside diameters of 150/160mm
Type 3: for pipe inside diameters of 200mm
Type 4: for pipe inside diameters of 250mm

Mounting pole

On top of the Rat Blocker® is a rotating pipe which engages the locking plates to secure it safely inside the pipe. The mounting pole fits into the rotating pipe to lower and tightening the Rat Blocker® in place.

The mounting pole measures 1 meter and can be extended by connecting one or more extension poles also measuring 1 meter each.

Installation instructions



Photo 1. Remove manhole cover and inspect/clean the well. Connect the mounting poles to the desired length and attach to the rotating pipe on top of the Rat Blocker®.



Photo 2. Lower the Rat Blocker and align with the sewer pipe. With gate in position 1, arrow must point against the flow direction; in position 2, arrow must point with the flow direction.




Photo 3. Push forward until the stopper on top of the Rat Blocker® is in contact with the pipe or the wall of the well. Turn the mounting pole clockwise until the Rat Blocker® is securely fastened against the pipe (it should not be over-tightened) and retract the mounting pole.

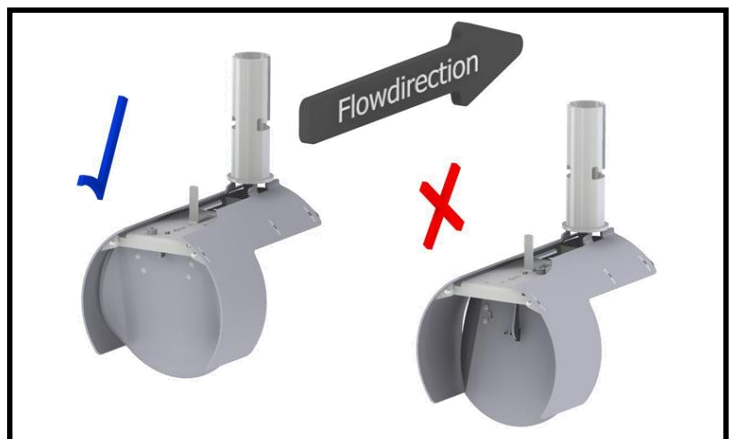
Important!! Before installation check that gates are mounted for the desired flow direction, see reverse.

Important – please note
Write installer's name and phone on the enclosed sign and mount visibly, so installer can be contacted if the Rat Blocker® needs to be removed to perform work/ maintenance in sewer.

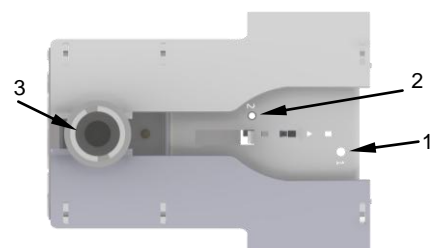
Correct orientation of the gates

The Rat Blocker® is produced with a reversible gate system so it can be installed regardless of flow direction.

 **Important!** Make sure the gates are placed correctly. Wrong installation direction leads to blockage of the well because the gates then cannot open. The pictures below show the correct gate position according to flow direction (shown by arrow).



Tools needed to reverse gates:
3mm unbrako key (included in package)



The picture shows the Rat Blocker® from above.

VERMEND RAT BLOCKER®

Instruction for reversing the gates.

Step 1.

First determine where the Rat Blocker® will be installed.
If it is to be used where the flow comes into the sewer, the gate must be in position **(1)**.
If it is to be used where the flow leaves the sewer, the gate must be in position **(2)**.



Step 2.

Start by turning the rotating pipe **(3)** clockwise all the way so the sides of the Rat Blocker® stay in the maximum expanded position.

The gate **(4)** is detached by unscrewing the umbraco fastener **(5)**.



Step 3.

The Gate is turned and is mounted in the new position.



Step 4.

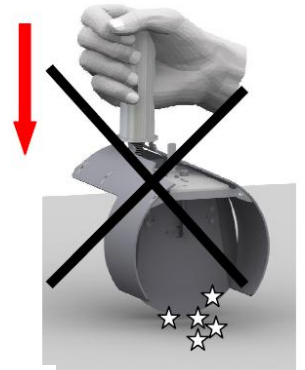
Finish by fastening the umbraco screw tightly with the umbraco key. Turn the rotating pipe counter clockwise until the sides of the Rat Blocker® are hanging loose around the gate. The Rat Blocker® is now ready to be installed.



The correct way to handle the Rat Blocker® before and during installation

The gates are sensitive - make sure to handle the Rat Blocker® gently to prevent damage and ensuring the gates work properly.

Before final installation test that the gates swing freely to open/close and also that the locking mechanism locks when only the front gate is moved.



Test gate function:

Move both gates by pushing gently on rear gate. The gates should open easily.



Test locking mechanism:

Pull gently on front gate. The locking mechanism should engage and prevent opening of the gates.

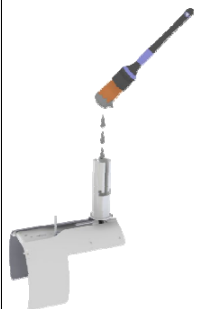
Be careful not to bend or overstretch the gates by hitting, pushing hard or otherwise impacting the gates.

Recommended annual service

To ensure long and reliable function of the Rat Blocker® it is recommended to inspect the Rat Blocker® once a year for the following:

- If any sedimentation- clean the Rat Blocker®
- Test for proper opening and locking function of the gates (see above).

Before remounting it is recommended to lubricate the bolt located inside the rotating pipe. Use a lubricant that is suitable for stainless steel.



Check the Rat Blocker regularly after installation.